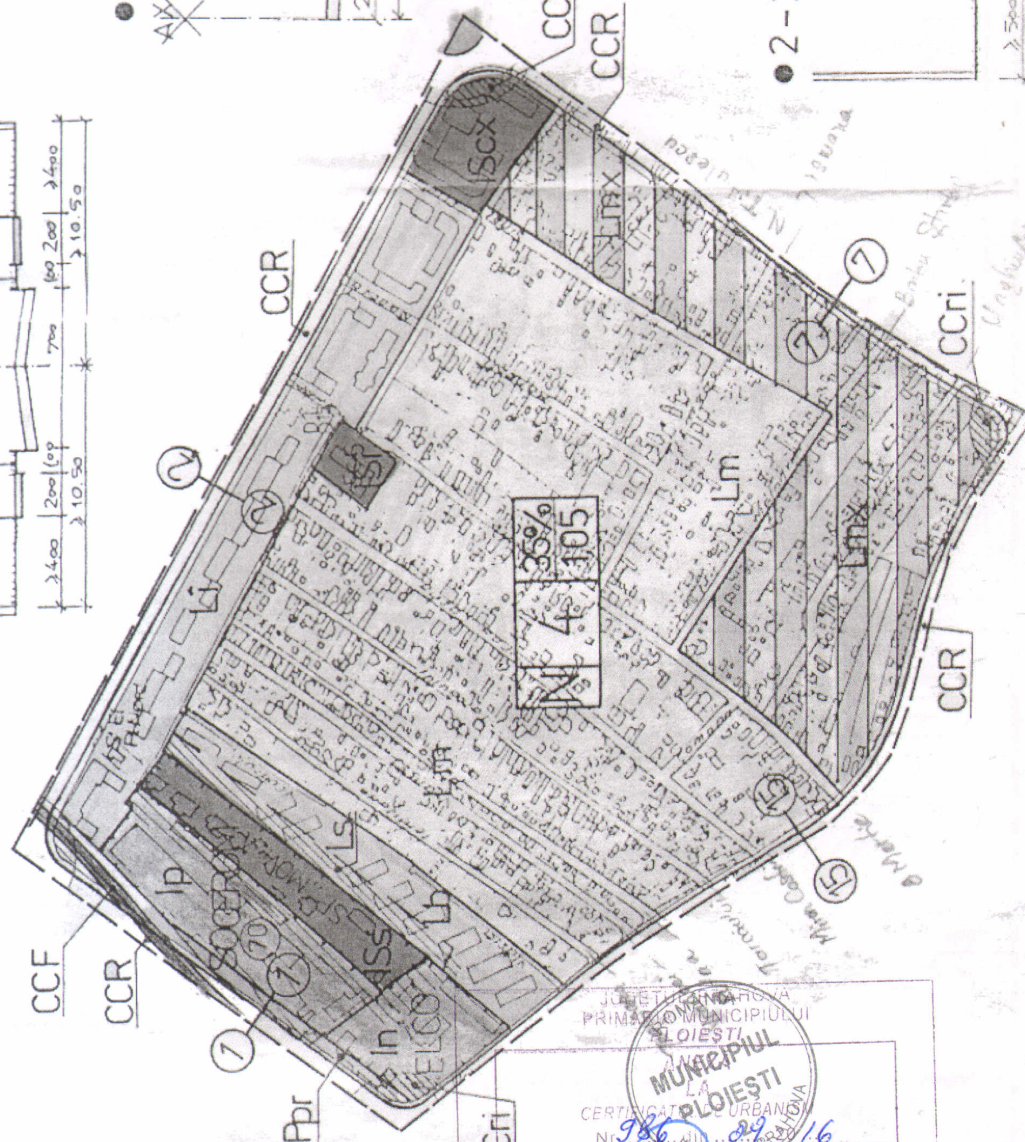
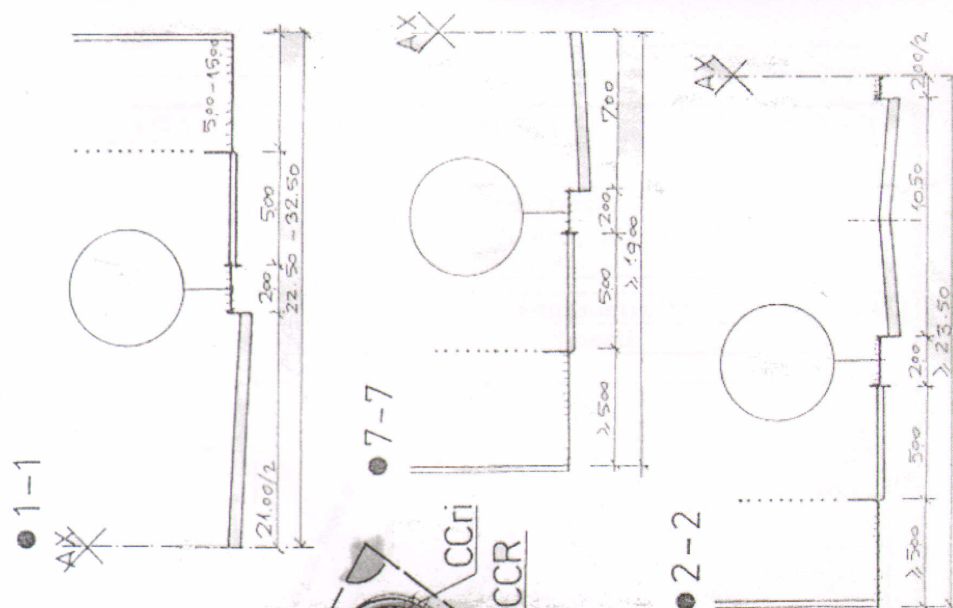


Technical drawing of a mechanical assembly, likely a bracket or support structure. The drawing shows two circular components (possibly wheels or pulleys) mounted on a horizontal base. A vertical line with an 'X' indicates a cross-section or a specific feature. Dimensions are provided in millimeters (mm):

- Overall width: 1400
- Distance between circular components: 200
- Distance from the left circular component to the vertical line: 100
- Distance from the vertical line to the right circular component: 200
- Distance from the right circular component to the right edge: 100
- Overall height: 1050
- Distance from the top edge to the horizontal base: 400

- DeLimitare
- Profile transversale
- tip
- || regim de aliniere
- ... aliniament



CERTIFICAT DE URBAN
Nr. 986 din 29
Județul PR20
Arbitrajul

T.M.